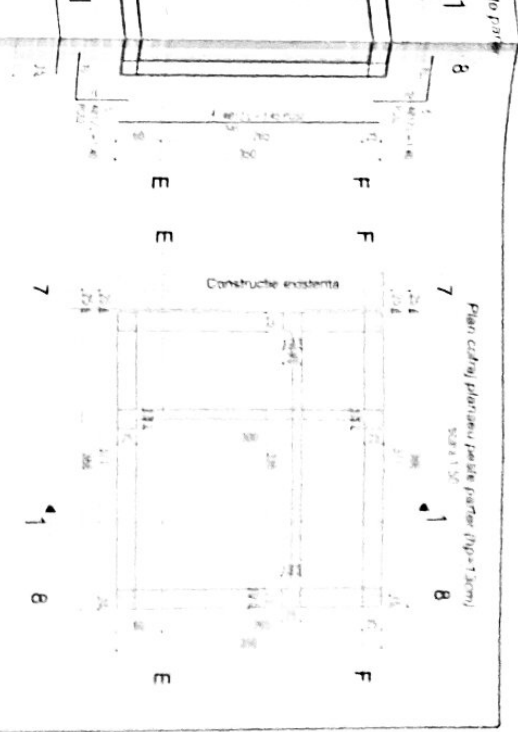
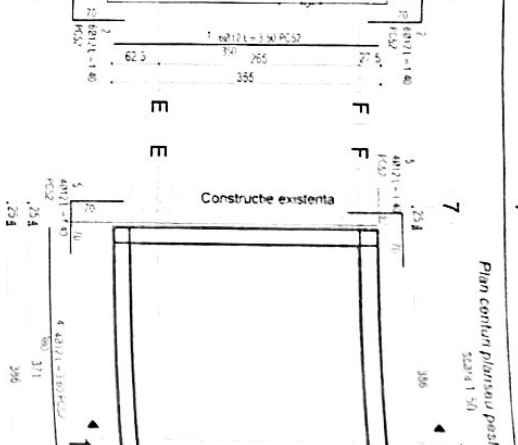
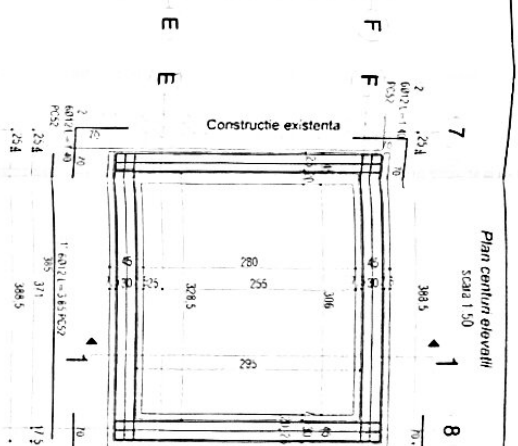
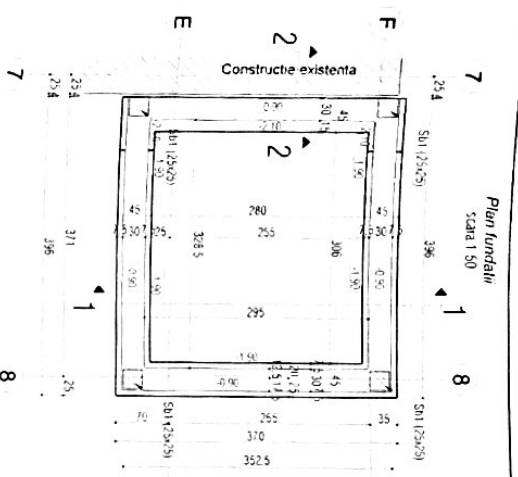
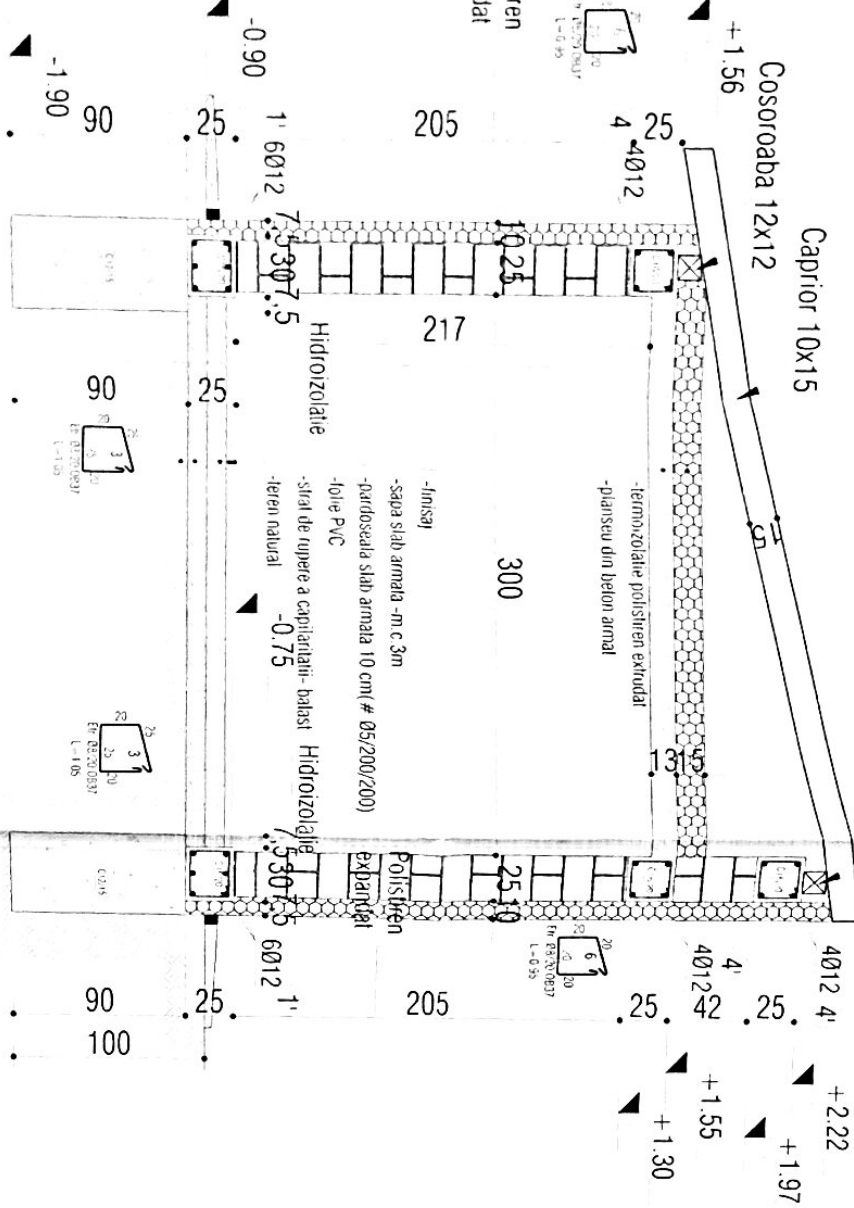


Sectiune verticala 1-1

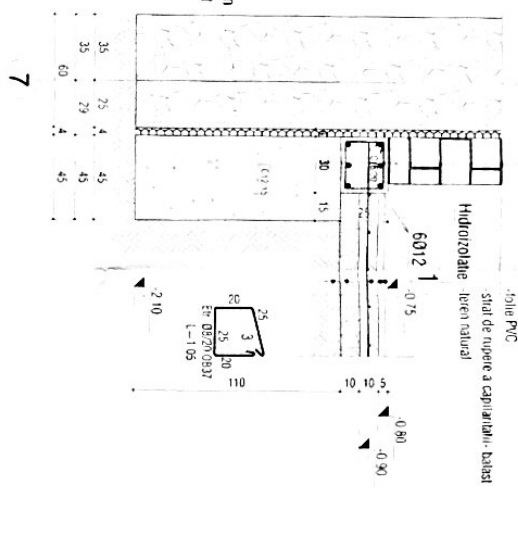
scara 1:50

Cosoroba 12x12



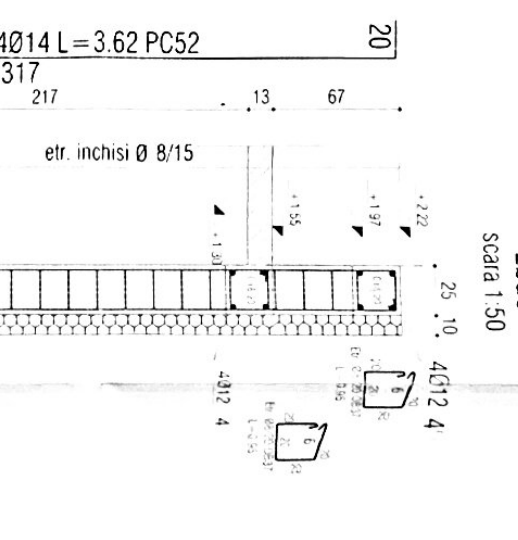
Deti lunete continua

scara 1:20



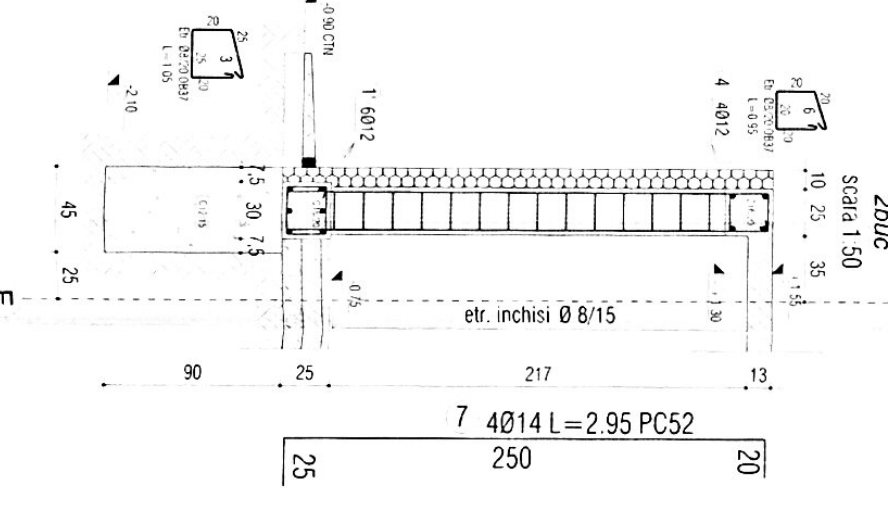
Armare samburi din axul F

scara 1:50



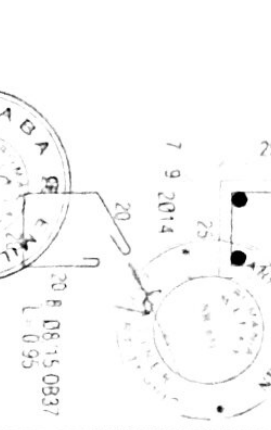
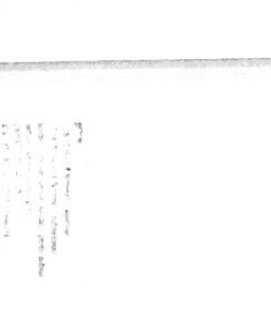
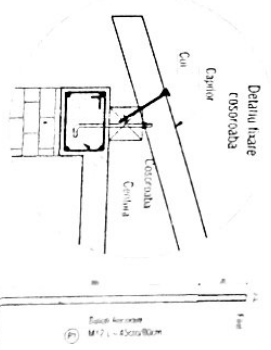
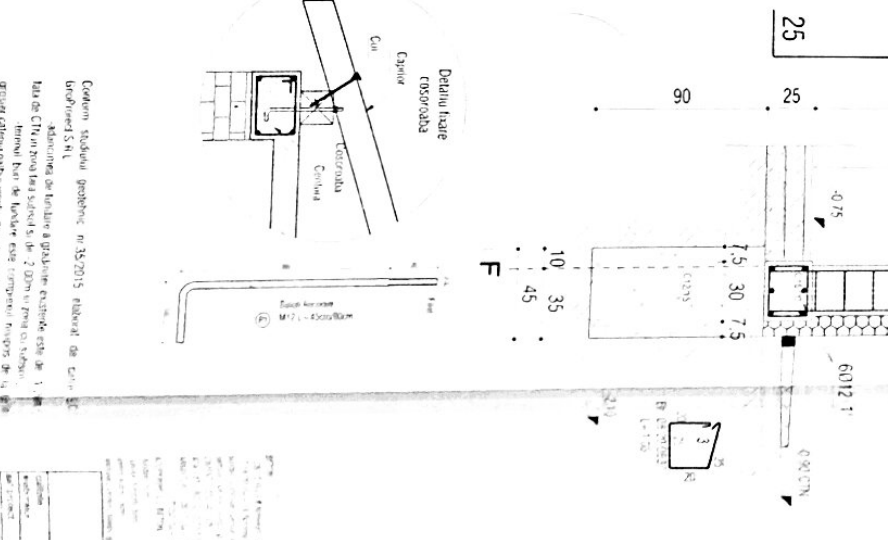
Armare samburi din axul E

scara 1:50



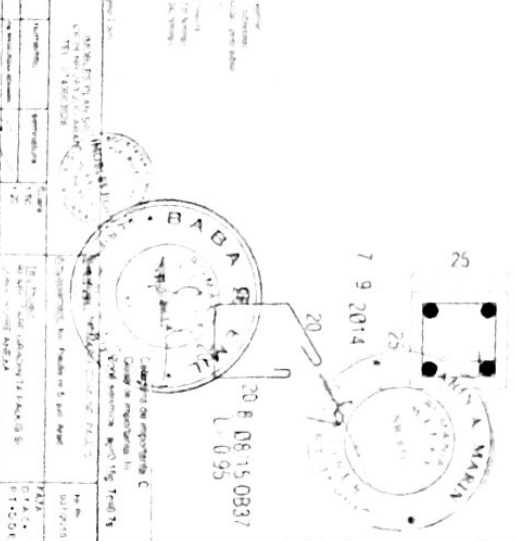
Armare samburi din axul F

scara 1:50



Secti Sambre

scara 1:20



7 9 2014
 30 R. 08.15.0837
 L. 0.95

7 9 2014

7 9 2014

7 9 2014

7 9 2014

7 9 2014

7 9 2014

7 9 2014

7 9 2014

7 9 2014

7 9 2014

7 9 2014

7 9 2014

7 9 2014

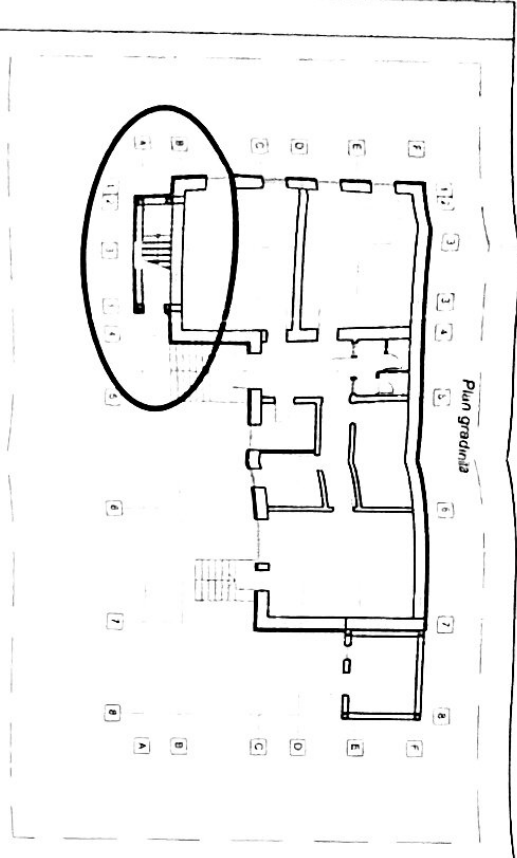
7 9 2014

7 9 2014

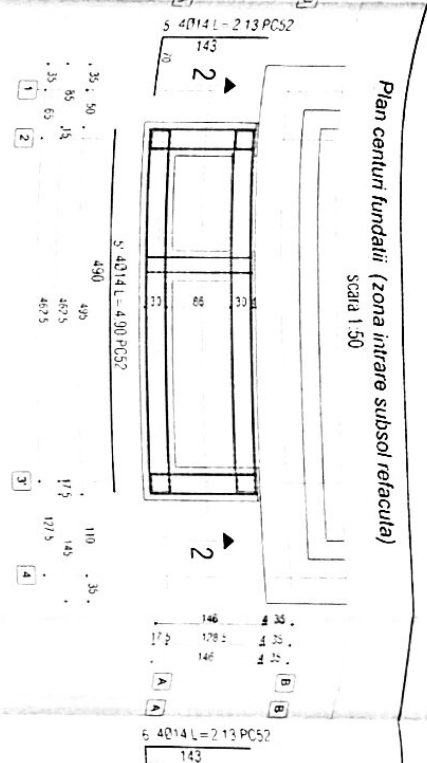
7 9 2014

7 9 2014

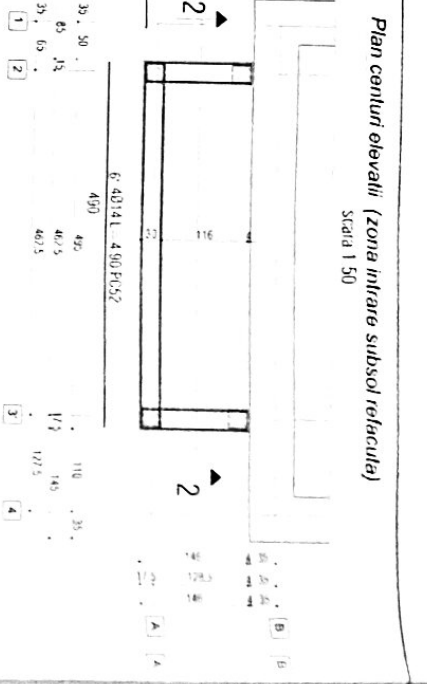
7 9 2014



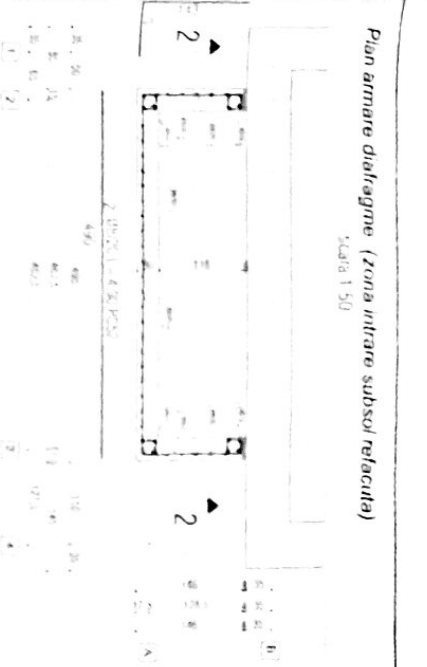
Plan gradina



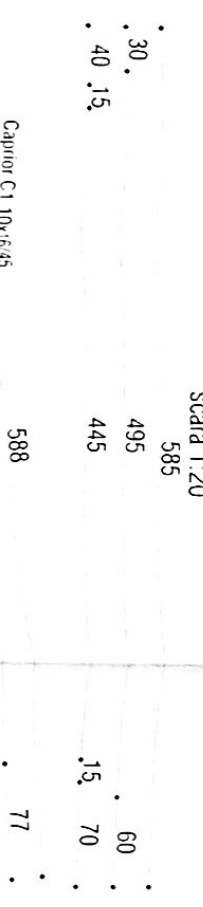
Plan centuri fundatii (zona intrare subsol refectia)
Scala 1:50



Plan centuri elevatii (zona intrare subsol refectia)
Scala 1:50



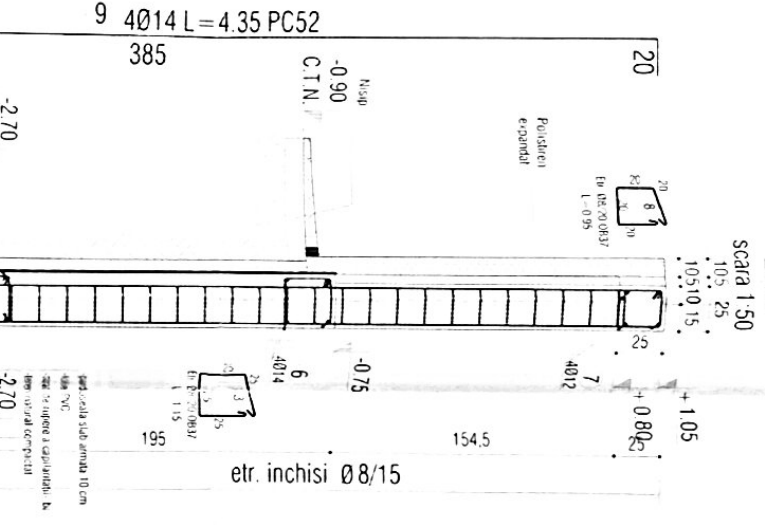
Plan armare diafragme (zona intrare subsol refectia)
Scala 1:50



Sectiune verticala 2-2
Scala 1:20

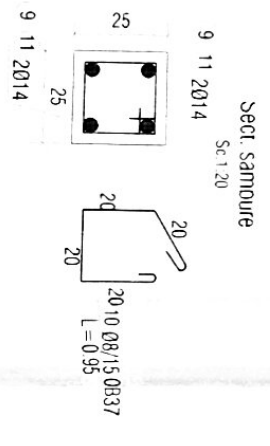
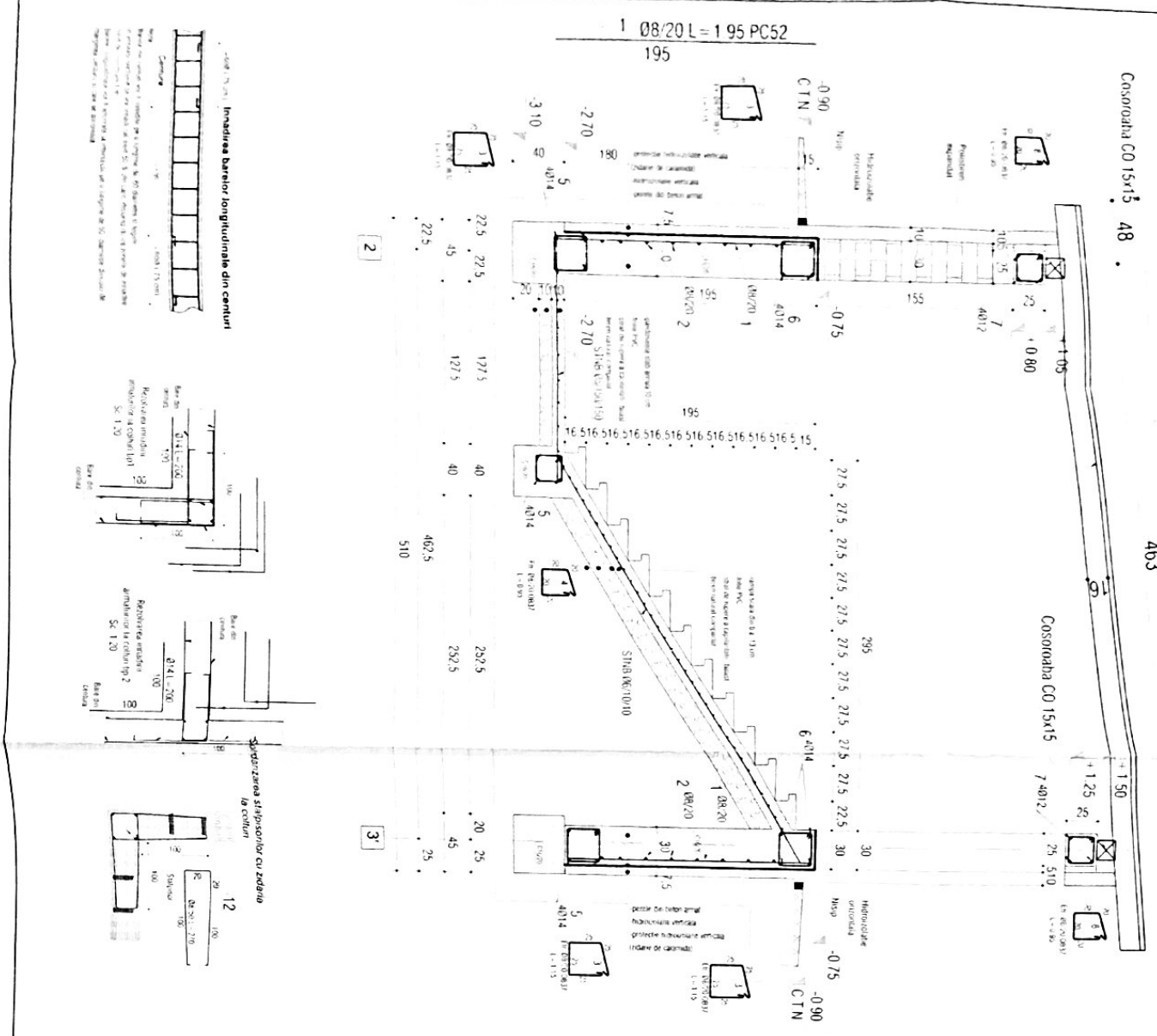
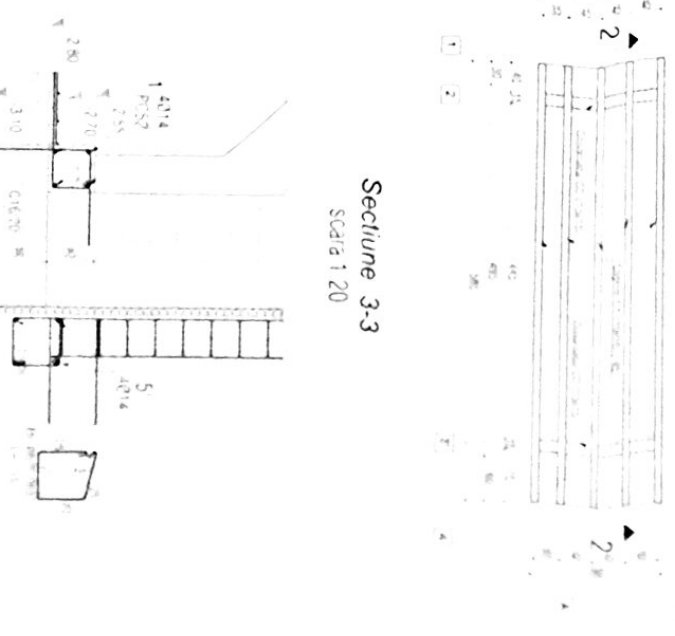
Armare sambun din axul 2
(zona intrare subsol refectia)
Zbuc
Scala 1:50

Armare sambun din axul 3'
(zona intrare subsol refectia)
Zbuc
Scala 1:50

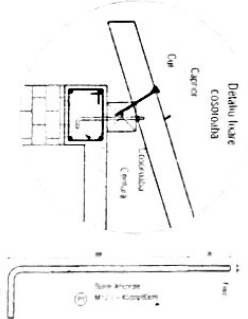


Plan sarpanta (zona intrare subsol refectia)
Scala 1:50

Sectiune 3-3
Scala 1:20



Secti. Samoure
Sc. 1:20



NOTA:
- Sarpanta sa apleasa din lemn de brad calitatea I
- Elementele sarpantii din lemn sa se scundezeaza prin chertari cu scobele tip linelute etc.
- Elementele sarpantii din lemn sa fie tratate antisepic si ignifug

Gratiera: metalice, goale, pe 35x75x5, alabastru, de
Cantari: metalice, goale, pe 35x75x5, alabastru, de
Gratiera: metalice, goale, pe 35x75x5, alabastru, de
Cantari: metalice, goale, pe 35x75x5, alabastru, de

Gratiera: metalice, goale, pe 35x75x5, alabastru, de
Cantari: metalice, goale, pe 35x75x5, alabastru, de
Gratiera: metalice, goale, pe 35x75x5, alabastru, de
Cantari: metalice, goale, pe 35x75x5, alabastru, de

BABA G. EMIL

MAMA & MAMA